

WENSINK SEEDS

4704 Wood Road, Monroeville, OH 44847

(419) 359-1501



25 – 25 Rebate:

Purchase and plant 25 bags of Wensink's **GMO Seed Corn** and get a 25¢ rebate on every unit of Wensink's **Roundup Ready® Soybeans** purchased and planted in 2012. We are again offering this bundling program to reward farmers. This program will include all GMO Seed Corn, including Roundup Ready®, YieldGard VT Triple®, and Genuity® SmartStax® varieties. The rebate will be paid in cash in the fall of 2012.

Tillage Parts - The next shipment order deadline is January 25, 2012 on Wiese tillage parts. Some Current Prices*

17"x 7ga. No-Till coulters (13 wave, 3/4" Cut)....	\$26.89	7" x 5/16" Mega Field Cultivator Sweeps JD & IH	\$8.88
17"x 7ga. No-Till coulters (13 wave, 1" Cut).....	\$27.79	9" x 5/16" Mega Field Cultivator Sweeps JD & IH	\$10.89
3" Twisted Plow Chisels (1/2" x 3" x 23")	\$15.52	20"x 11/2"R Soil Saver Coulter Blades (3/16" Thick)	\$32.16
4" Twisted Plow Chisels (1/2" x 4" x 26").....	\$18.33	20"x 11/2"R Soil Saver Coulter Blades (1/4" Thick)	\$36.16
7" x 1/4" Field Cultivator Sweeps JD & IH	\$5.79	20" x 7ga Disc Blades	\$24.98
9" x 1/4" Field Cultivator Sweeps JD & IH	\$6.69	Poly shank protectors.....	\$1.35
		16" x 7ga No-Till Coulter (JD, Yetter, GP, Kinze)(13 wave, 1" cut)....	\$26.23

Replacement Fertilizer & Seed Opener Blades:

18" Single disc opener blade; fits JD750 , etc	\$25.03
18" x 3/16 Thick KINZE Single fertilizer coulters blade.....	\$28.18
16" x 3/16 Thick JD Single fertilizer coulters blade.....	\$21.84
Most other blades are available	CALL FOR PRICES

Planter Graphite & Talc:

8# White Talc bucket.....	\$15.89
40# White Talc bag.....	\$36.45
1# Graphite bottle.....	\$4.94
5# Graphite bucket.....	\$15.96
80/20 talc/graphite (8#).....	\$22.56
80/20 talc/graphite (40#).....	\$44.56

Planter Seed Disc Openers & Fertilizer Openers:

13 1/2" Great Plains disc opener extra heavy hub (Complete w/ hub & 205 bearing).....	\$24.46
15" JD or Kinze opener seed units (Complete w/ hub & bearings).....	\$23.71
13 1/2" JD opener for double disc fertilizer unit (Complete w/ hub & bearings).....	\$30.12
14" Case-IH opener assembly (Complete w/ hub & bearings, R or L hand).....	\$25.10
13 1/2" White opener (pop-in dust caps).....	\$24.33
15" JD or Kinze seed opener units (Extra heavy hub 205 bearing & 3.5mm blades).....	\$24.21
Most others are available	CALL FOR PRICES & AVAILABILITY

COMBINE PARTS We have the Easy-Cut combine sickle bar conversion kits; also, Slippery Shoe plastic combine skid plate covers, and the nylon reel Gentle Fingers (for wooden bats, steel bats and the new pipe reel design). Call for prices.

FARM CHEMICALS We have prices on some chemicals. Call for products and prices.

Genuity® ROUNDUP READY 2 YIELD® SOYBEANS New Lower Price! We have three varieties. We carry a range from 2.6 to 3.4 RM. These can be treated with Acceleron® Seed Treatment.

ROUNDUP READY® SOYBEANS Descriptions of five varieties are enclosed. We continue to offer the very popular 3106RR and 2914RR. All varieties can be treated with Acceleron® Seed Treatment.

CERTIFIED WYANDOT & DENISON SOYBEANS are both available.

ACCELERON® TREATMENT This seed treatment is offered on both RR2Y & RR Soybeans this year. It offers protection for both pathogens and insects. More information enclosed. This is an additional \$8.75/unit. This must be prepaid and is NOT returnable.



* Prices subject to change. Call for more information and current prices.



Wensink Premium Seed Corn

“Performance at half the price”



11/1/11

2012 Early Order Seed Corn Program

SAME PRICING AS LAST YEAR!! Many varieties are the same price as last year! Our Early Order Seed Corn Program ends December 30, 2012. See chart below and enclosed variety descriptions. We have three new varieties this year: one Genuity® SmartStax® RIB Complete™ and two conventional. We are now offering an **early order discount of \$39.00 off per unit** from the in-season list price. There is also an **early pay discount of \$2.00 per unit** for payment by January 5, 2012 and **up to \$6.00 per unit volume discount**. Order early for best seed size selection. If you have questions, give us a call at (419) 359-1501.

				YOUR COST*	
				TRADITIONAL VARIETY	
				Order by 12/30/2011	
Units	Volume	Discounts		Pay on Pickup*	Pay by 1-5-2012*
		Early Order	Early Pay		
1-24	-	\$39.00	\$2.00	\$69.50	\$67.50
25-49	\$1.00	\$39.00	\$2.00	\$68.50	\$66.50
50-99	\$3.00	\$39.00	\$2.00	\$66.50	\$64.50
100-149	\$4.00	\$39.00	\$2.00	\$65.50	\$63.50
150-199	\$5.00	\$39.00	\$2.00	\$64.50	\$62.50
200+	\$6.00	\$39.00	\$2.00	\$63.50	\$61.50

\$2.00/unit Grade Discounts on plateless & small sizes when available. Pickup Date: March 20, 2012.

All varieties have 80,000 kernels per unit.

*Prices subject to change; variety selection dependent upon availability. Order early for best selection. Above price is for SX-630. Due to additional royalty fees, SX-569 and SX-601 cost an additional \$4.00 per unit over above price. SX-492 costs an additional \$9.00 per unit over above price. SX-151 and SX-331 cost an additional \$10.50 per unit over above price. All remaining varieties' prices include cost of Monsanto's Traits.



Genuity® SmartStax® RIB Complete™ Corn - This new technology provides control of the absolute broadest spectrum of above and below ground insects and herbicide (Roundup Ready® and Liberty Link®). This variety comes treated with the Acceleron® Seed Treatment. Refuge in the Bag makes planting simple and convenient with no separate structured refuge required. This is the most advanced trait platform delivering all-in-one crop protection. We are offering one variety at this time, the SX-612 SMARTSTAX RIB, a 108 day powerhouse with totally new genetics.



Roundup Ready® Corn 2 We offer four Roundup Ready® varieties to meet your needs. SX-451RR is a early mid season variety. It is a super yielder with great dry down. We continue to offer SX-520RR, a mid-season variety, and the very popular full season varieties SX-559RR and SX-603RR.



YieldGard VT Triple® This is the total insect control with the Roundup Ready® trait. We have two varieties: SX-510RRVT3 a mid season variety and the very popular SX-619RRVT3. This is a fuller-season variety and was one of the top yielders in our plots. All YieldGard VT Triple® varieties are treated with Poncho® 250.

Poncho® 250 for \$10.50 Program - BACK BY POPULAR DEMAND!! If you order your seed corn treated with Poncho® 250 before the early order deadline of 1-5-12 it will cost only 10.50 per unit. **This is a savings of \$10.00 off the list price.** Poncho® treatments offer excellent insect control and convenience with no liquids to mix and no insecticide hoppers to fill or load. Poncho® 250 offers early season protection against black cutworms, wireworms, white grubs, seed corn maggots, grape colaspis, flea beetles, chinch bugs, and other early-season pests. The cost is \$17.50 per unit, after the early order deadline of 12-30-11, a \$3.00 discount off the list price. This needs to be pre-paid, and the seed is non-returnable.



Roundup PowerMax®: Fall is the best time to apply on perennial weeds and Winter Annuals.

“Roundup Power Max: Cleaner Fields – Higher Yields®”

Continued on
Next Page





2012 PREMIUM SEED CORN



SX 151

- RM 95-96 day
- Medium-tall dual purpose grain or silage hybrid
- Excellent emergence, well suited for no-till
- Healthy plant with very good late season intactness
- Flex ear style with very good test weight
- Outstanding yield potential for maturity

SX 331

New

- RM 100-101 day
- Solid overall agronomics
- Flex-ear style with very consistent development
- Very good test weight
- Excellent emergence, well suited for no-till
- High yielding grain hybrid with excellent plant health

SX 451RR

- RM 104-105 day
- Good early plant vigor
- Good yield-to-moisture ratio
- Good for corn-on-corn or no-till situations
- Medium-tall attractive plant with nice fall intactness
- Acts like a 106RM through flowering, but quick dry-down and acts like a 102 RM at harvest
- Good ear girth and kernel size
- Roundup Ready® variety with good silage potential

SX 492

New

- RM 105-106 day
- Outstanding plant health & integrity
- Solid agronomics allows positioning flexibility and southern movement
- Very good kernel depth maintains yield in stress situations
- Plant moderate to high populations for best results
- Medium tall hybrid with full flex ears



Most varieties can be treated with Poncho® 250. See page 1 for details.

SX 510RR VT3



- RM 105-106 day
- YieldGard VT Triple®, protection from corn borer, corn rootworm, and Roundup Ready®
- Treated with Poncho® 250
- Very good disease package
- Very good stalk and root ratings
- Super yield potential and test weight
- Better dry down than longer season varieties
- Determinate ear type with medium ear height and plant height, requires higher populations

SX 520 RR



- RM 105-106 day
- Stress-tolerant hybrid adapted East
- Attractive fall appearance with showy ears
- Long ears with 14-18 KR, and medium-depth kernels
- Good overall disease package
- Roundup Ready® variety

SX 559RR



- RM 108 day
- Roundup Ready® variety that is strong performing and widely adapted
- Handles clay soils
- Large girthy ears with deep kernels
- Solid stalk and root package with good late season appearance



Before opening a bag of seed, be sure to read, understand and accept the stewardship requirements, **including applicable refuge requirements for insect resistance management**, for the biotechnology traits expressed in the seed as set forth in the Monsanto Technology/Stewardship Agreement that you sign. By opening and using a bag of seed, you are reaffirming your obligation to comply with the most recent stewardship requirements.



2012 PREMIUM SEED CORN



SX 569

- RM 108 day
- Excellent top end yield potential
- Solid stalk and root package with good late season appearance
- Large girthy ears
- Medium-tall plant with medium ear placement
- Works well on all soil types

SX 601

- RM 107-109 day
- Outstanding yield potential and excellent eye appeal
- Excellent seedling vigor and early growth for both conventional and no-till situations
- Wide adaptability allows greater planting flexibility
- Good general disease tolerance
- Large girthy ears, with better test weight and grain quality

SX 612 SMARTSTAX RIB



- RM 108-109 day
- Genuity® SmartStax®, contains protection from corn rootworm, and corn borer
- Roundup Ready® + Liberty Link® herbicide resistant
- Consistent performer with very good stress tolerance
- Good ear flex with girthy ear (16-18 kernel rows)
- Very good roots, stalks and test weight
- Fast dry down with good grain quality
- Widely adapted across growing area
- **Refuge-In-The-Bag** solution with 5% refuge, more high yielding corn per acre
- RIB makes refuges simple and convenient

SX 603RR



- RM 107-109 day
- Top end yields
- Roundup Ready® variety with outstanding yield potential
- Excellent stress tolerance, with excellent health and disease package
- Girthy, flex-ear with very good grain quality & test weight
- Population: 26,000 to 30,000

SX 619RR VT3



- YieldGard VT Triple®, protection from corn borer, corn rootworm, and Roundup Ready®
- Treated with Poncho® 250
- Full season maturity with super yield potential
- Excellent seedling vigor and early season growth for both conventional and no-till
- Excellent root strength
- Taller plant height

SX 630 - Best Seller

- RM 109-111 day
- Improvement on SX-635A
- Shows impressive early growth
- Strong stalk & roots
- Excellent conventional or no-till choice
- Large girthy ears
- Good dry down and stay green
- Adapts well to various soil types, and excels with high management

Monsanto Company is a member of Excellence Through Stewardship® (ETS). Monsanto products are commercialized in accordance with ETS Product Launch Stewardship Guidance, and in compliance with Monsanto's Policy for Commercialization of Biotechnology-Derived Plant Products in Commodity Crops. Commercial product(s) has been approved for import into key export markets with functioning regulatory systems. Any crop or material produced from this product can only be exported to, or used, processed or sold in countries where all necessary regulatory approvals have been granted. It is a violation of national and international law to move material containing biotech traits across boundaries into nations where import is not permitted. Growers should talk to their grain handler or product purchaser to confirm their buying position for this product. Excellence Through Stewardship® is a registered trademark of Biotechnology Industry Organization.

B.t. products may not yet be registered in all states. Check with your Monsanto representative for the registration status in your state.

IMPORTANT IRM INFORMATION: RIB Complete™ corn does not require the planting of a structured refuge **except** in the Cotton-Growing Area where corn ear-

worm is a significant pest. Genuity® SmartStax® RIB Complete™ Corn is a blended seed corn product. See the IRM/Grower Guide for additional information. Always read and follow IRM requirements.

Roundup Technology® includes Monsanto's glyphosate-based herbicide technologies. **ALWAYS READ AND FOLLOW PESTICIDE LABEL DIRECTIONS.** Roundup Ready® crops contain genes that confer tolerance to glyphosate, the active ingredient in Roundup® brand agricultural herbicides. Roundup® brand agricultural herbicides will kill crops that are not tolerant to glyphosate. Acceleron and Design®, Genuity and Design®, Genuity Icons, Genuity®, RIB Complete and Design™, RIB Complete™, Roundup PowerMAX®, Roundup Ready 2 Technology and Design®, Roundup Ready 2 Yield®, Roundup Ready®, Roundup Technology®, Roundup®, VT Triple PRO™, and YieldGard VT Triple® are trademarks of Monsanto Technology LLC. Ignite® and LibertyLink® and the Water Droplet Design® are registered trademarks of Bayer. Herculex® is a registered trademark of Dow AgroSciences LLC. Respect the Refuge and Corn Design® and Respect the Refuge® are registered trademarks of National Corn Growers Association. All other trademarks are the property of their respective owners. ©2011 Monsanto Company.



SEEDCORN QUICK FACTS

YOUR PRICE*

Early Order*

	<u>Hybrid</u>	<u>Relative Maturity</u>	<u>TRAITS**</u>	<u>Planting Population</u>	<u>In-Season List Price</u>	<u>Pay On Pick Up</u>	<u>Pay By 1-5-2012</u>	
						<u>Single Unit Price</u>	<u>Single Unit Price</u>	<u>Max Volume Price</u>
	SX-151	95-96		26-32	\$119.00	\$80.00	\$78.00	\$72.00
NEW	SX-331	100-101		26-32	\$119.00	\$80.00	\$78.00	\$72.00
	SX-451RR	104-105	RR	28-34	\$187.00	\$148.00	\$146.00	\$140.00
NEW	SX-492	105-106		28-32	\$117.50	\$78.50	\$76.50	\$70.50
	SX-510VT3	104-106	VT3	28-34	\$231.00	\$192.00	\$190.00	\$184.00
	SX-520RR	105-106	RR	26-32	\$185.00	\$146.00	\$144.00	\$138.00
	SX-559RR	108-109	RR	26-32	\$181.50	\$142.50	\$140.50	\$134.50
	SX-569	108-109		26-32	\$112.50	\$73.50	\$71.50	\$65.50
	SX-601	107-109		26-30	\$112.50	\$73.50	\$71.50	\$65.50
	SX-603RR	107-109	RR	26-32	\$181.50	\$142.50	\$140.50	\$134.50
NEW	SX-612 STAX	108-109	STAX RIB	28-34	\$257.00	\$218.00	\$216.00	\$210.00
	SX-619VT3	109-111	VT3	28-34	\$243.00	\$204.00	\$202.00	\$196.00
	SX-630	109-110		26-32	\$108.50	\$69.50	\$67.50	\$61.50

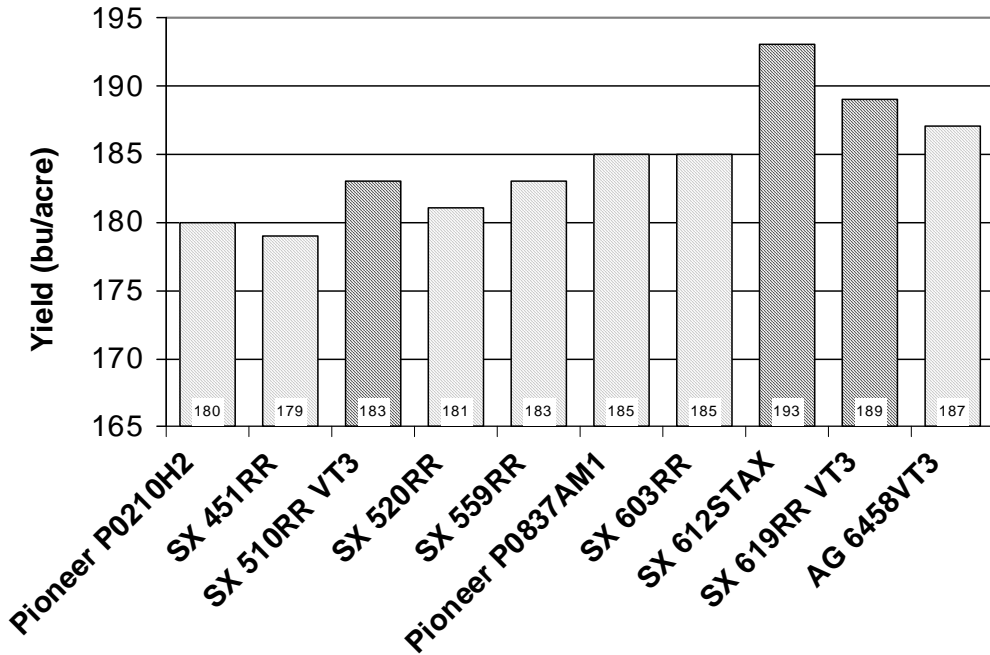
*Early Winter deadline = 1-5-12. Prices subject to change without prior notice; variety selection dependent upon availability.

Order early for best selection

**Trait Description: RR = Roundup Ready®, VT3 = YieldGard® VT3 with Roundup Ready® 2 Technology, STAX RIB= Genuity® SmartSTAX® RIB Complete™

2011 GMO Seed Corn Test Plot Data

Planted 5-31-11, Harvested 10-27-11, Monroeville, Ohio



PLANT YIELDGARD VT TRIPLE®

for THE Barrier Against Insects and Unsurpassed Weed Control

YIELDGARD VT TRIPLE® OFFERS:

- Effective, Consistent In-Plant Protection
- Maximum Roots and Healthier Stalks
- Enhanced Uptake of Moisture and Nutrients
- Broad-Spectrum Weed Control in the Roundup Ready® System
- Convenience and Application Flexibility
- Outstanding Crop Safety

YIELDGARD VT TRIPLE PROVIDES PROTECTION AGAINST:

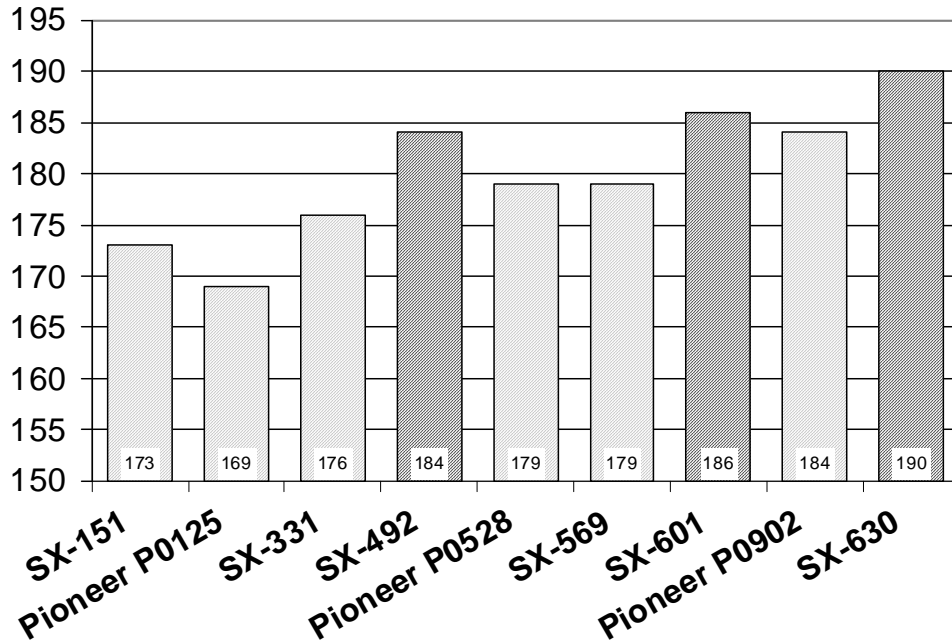
- Western Corn Rootworms
- Northern Corn Rootworms
- Mexican Corn Rootworms
- European Corn Borers
- Southwestern Corn Borers
- Black Cutworms
- Sugarcane Borers
- Fall Armyworms
- Stalk Borers
- Wireworms
- White Grubs
- Seed Corn Maggots
- Early Flea Beetles
- Earworms


	MANAGEMENT					GROWTH						HARVEST			DISEASES / INSECTS									
	Value Added Trait	Insect Resist. Management	Relative Maturity	GDUs to Mid-Pollination	GDUs to Black Layer	Emergence	Seedling Growth	Root Strength	Stalk Strength	Plant Height	Ear Placement	Staygreen	Drydown	Test Weight	NCLB R1	NCLB R2	Southern Corn Leaf Blight	Gray Leaf Spot	Eye Spot	Common Rust	Anthraxnose Leaf Blight	Goss's Wilt	European Corn Borer	Root Worm
SX-451RR	RR		104	1301	2545	VG	G	VG	G	MT	M	G	E	G	VG	G	F	G	VG	G	VG	A	P	P
SX-510RR VT3	VT3	X	105	1272	2518	VG	VG	VG	VG	M	M	E	VG	VG	VG	VG	VG	VG	VG	E	VG	VG	E	E
SX-520RR	RR		106	1325	2614	VG	VG	VG	VG	MT	MH	VG	VG	VG	E	E	VG	G	VG	VG	VG	P	P	
SX-559RR	RR		108	1290	2540	VG	VG	VG	G	MT	MH	G	VG	VG	VG	VG	A	VG	G	VG	G	VG	P	P
SX-603RR	RR		109	1305	2670	VG	G	VG	G	MT	M	G	VG	G	VG	E	VG	A	VG	E	G	G	P	P
SX-612STAX	STAX	X	109	1290	2678	VG	VG	VG	VG	MS	ML	F	G	G	VG	VG	G	G	VG	G	G	VG	E	E
SX-619 VT3	VT3	X	109	1320	2820	VG	G	E	G	MT	M	A	G	A	E	VG	A	A	G	G	G	G	E	E

E=Excellent VG=Very Good G=Good A=Average F=Fair P=Poor T=Tall S=Short M=Medium/Mid H=High L=Low

2011 Conventional Seed Corn Plot Data

Planted 5-31-11, Harvested 10-27-11, Monroeville, Ohio

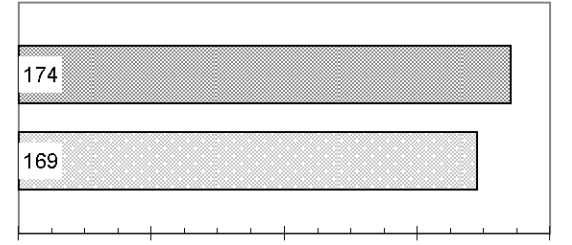




Poncho 250

- Covers all seven major early corn insect pests, up to the 5-leaf stage.
- Provides seed and seedling protection.
- Contact and systemic activity offers highly effective, broad-spectrum insect control.

Yields 5* bu./ac. more than seed not treated with an insecticide

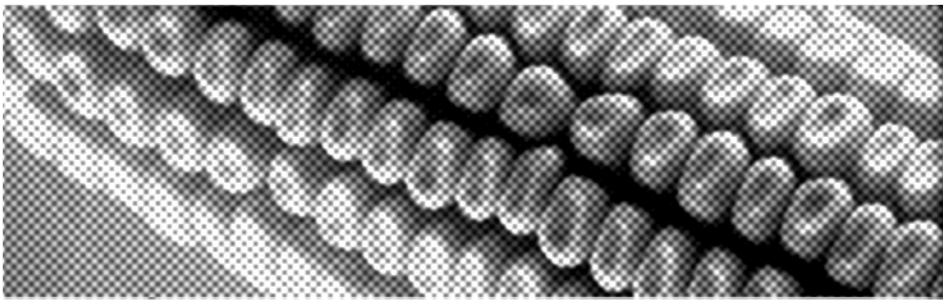


**Based on 616 side-by-side field trials comparing the performance of Poncho 250 treated seed to seed not treated with an insecticide (2003-2006).*

Always read and follow label directions. Poncho® is a registered trademark of Bayer.

	MANAGEMENT				GROWTH						HARVEST			DISEASES / INSECTS									
	Value Added Trait	Relative Maturity	GDUs to Mid-Pollination	GDUs to Black Layer	Emergence	Seedling Growth	Root Strength	Stalk Strength	Plant Height	Ear Placement	Staygreen	Drydown	Test Weight	NCLB R1	NCLB R2	Southern Corn Leaf Blight	Gray Leaf Spot	Eye Spot	Common Rust	Anthraxnose Leaf Blight	Goss's Wilt	European Corn Borer	Root Worm
SX-151		96	1220	2290	VG	F	G	G	M-T	M	G	G	G	VG	VG	G	G	G	VG	G	G	P	P
SX-331		101	1260	2380	VG	E	G	VG	M	M	G	G	VG	G	G	G	VG	G	VG	G	G	P	P
SX-492		105	1278	2478	VG	VG	VG	VG	M-T	M	E	G	G	VG	VG	G	VG	VG	G	G	VG	P	P
SX-569		108	1296	2590	VG	VG	VG	G	M-T	M-H	G	VG	VG	VG	A	VG	G	VG	G	VG	G	P	P
SX-601		109	1305	2670	VG	VG	VG	G	M-T	M	G	VG	G	VG	E	VG	A	VG	E	G	G	P	P
SX-630		110	1310	2690	VG	VG	G	VG	M-T	M	G	VG	G	VG	VG	VG	A	G	VG	G	G	P	P

E=Excellent VG=Very Good G=Good A=Average F=Fair P=Poor T=Tall S=Short M=Medium/Mid H=High L=Low



The All-in-One Corn Trait with Root, Stalk and Ear Protection

- The most advanced, all-in-one corn trait offers the broadest spectrum of above and below ground insect protection and weed control versus any competitor in the market
- Genuity® SmartStax® contains multiple modes-of-action which is the only proven means to reduce structured refuge above and below ground. It is approved for a 5% refuge in the corn belt
- For every 3 kernels lost per ear of corn, 1 bushel per acre is lost



More Beans Per Pod, More Bushels Per Acre

- Game changing technology for soybeans that significantly increases farmer yield opportunity
- Same proven benefits of Roundup Ready® soybeans with significantly higher yield opportunity
- Only soybean trait that has the primary benefit of additional yield opportunity
- Higher yield is the direct result of more beans per plant and more seeds per plant versus first generation Roundup Ready soybeans

Acceleron® Insecticide and Fungicide Seed Treatment Products for Soybeans

PLANT HEALTH

Improved plant health through more rapid and increased emergence of seedlings under certain colder conditions. This helps soybeans achieve a better start which has been shown to lead to enhanced yield.

DISEASE-FIGHTING PROTECTION

Excellent control of *Pythium*, *Fusarium*, *Phytophthora* and *Rhizoctonia* from an exclusive fungicide combination featuring *pyraclostrobin* and *metalaxyl*.

INSECT PROTECTION

In addition to disease-fighting protection and plant health, insect protection from early season insects such as bean leaf beetles and aphids utilizing *imidacloprid*.





ROUNDUP READY SOYBEAN QUICK FACTS

Variety	Maturity	Emergence	Standability	No-Till Adaptability	Iron Chlorosis	Soybean Cyst Nematode	Phytophthora Gene	Phytophthora Field Tolerance	Sclerotinia White Mold	Brown Stem Rot	Sudden Death Syndrome	Height (in.)	Plant Type	Row Width
Genuity® Roundup Ready 2 Yield® Soybeans														
2612RRY2	2.6	1.6	2.1	1.7	2.4	MR3 MR14	1C	2.3	2.5	1.0	2.2	T	Int. Bush	ALL
2811RR2Y	2.8	1.4	2.3	1.4	3.0	MR3 MR14	1C	1.6	2.8	1.0	1.4	M	Int. Bush	ALL
2912RR2Y	2.9	1.2	1.7	1.8	2.7	MR3 MR14	1C,3A	1.6	2.0	1.9	1.4	T	Int. Bush	ALL
3212RR2Y	3.2	1.9	1.9	1.5	2.2	MR3 MR14	1C	2.0	2.3	1.5	1.8	M-T	Int. Bush	ALL
3411RR2Y	3.4	1.9	2.0	1.6	2.5	MR3 MR14	1C	1.7	2.2	2.1	2.1	T	Med Bush	ALL
Roundup Ready® Soybeans														
2608RR	2.6	1.7	1.5	1.5	-	-	1K	1.5	2.8	2.5	2.5	M-T	Med Bush	ALL
2900RR	2.9	1.0	1.7	1.3	-	-	1K	1.3	1.7	1.0	1.8	M-T	Bush	ALL
2909RRCystX	2.9	1.2	1.7	1.8	-	CYSTX	1K	2.4	2.2	2.0	2.4	M	Med Bush	30" or less
2914RR	2.9	1.5	1.6	1.5	-	-	1K	1.7	2.5	2.0	1.9	T	Up Bush	ALL
3106RR	3.1	1.5	1.6	1.0	-	-	1C	1.8	2.1	R	1.5	T	Up Bush	ALL

1=Best 5=Worst

NEW SEED OUTYIELDS BIN-RUN SEED A recent analysis of 266 university and independent third-party trials confirms that professionally grown soybeans usually outyields bin-run seed. New seed had a winning yield in 69 percent of the trials. The average yield advantage was 1.8 bushels per acre.

North Dakota State University issued a report last June stressing that the real costs of bin-run seed go far beyond the market price of soybean seed. "The hidden costs of cleaning, transportation, storage, interest, time and labor easily add dollars to the bin-run price tag," the report said. "Farmers that bin-run seed year after year also lose on the latest genetic yield improvements, such as developments in Phytophthora root rot resistance."

Also growers who use saved seed don't qualify for replant benefits under Monsanto's Roundup Rewards program.

Benefits of New Seed:

Convenience

- Highest quality and highest yield vs. bin-run
- Access to most elite germplasm

Economics of New Seed vs. Bin-Run seed

- Average loss of ~10-15% cleanout at harvest for bin-run seed
- Bin Run planting rates are generally 15% higher than new certified seed.

Limited Warranty Benefits

- Risk management benefits of Roundup Rewards® (over \$600 million in benefits paid)
- Dealer agronomic support before and after the sale

New Innovations:

- Stronger intellectual property rights in the seed sector are associated with higher yield growth
- Monsanto's 100% commitment to agriculture

Wensink Farm Seeds has a "No Saved Seed" Policy for any seed containing a patented trait. Seeds containing the Roundup Ready® trait and the Genuity® Roundup Ready 2 Yield® trait are protected under numerous United States patents, including Patent No. RE39,247. It is unlawful to save Roundup Ready® Soybeans or Genuity® Roundup Ready 2 Yield® Soybeans for planting or transfer to others for use as a planting seed.



Monsanto Company is a member of Excellence Through Stewardship® (ETS).

Monsanto products are commercialized in accordance with ETS Product Launch Stewardship Guidance, and in compliance with Monsanto's Policy for Commercialization of Biotechnology-Derived Plant Products in Commodity Crops. This product has been approved for import into key export markets with functioning regulatory systems. Any crop or material produced from this product can only be exported to, or used, processed or sold in countries where all necessary regulatory approvals have been granted. It is a violation of national and international law to move material containing biotech traits across boundaries into nations where import is not permitted. Growers should talk to their grain handler or product purchaser to confirm their buying position for this product. Excellence Through Stewardship® is a registered trademark of Biotechnology Industry Organization.

Roundup Technology® includes Monsanto's glyphosate-based herbicide technologies. **ALWAYS READ AND FOLLOW PESTICIDE LABEL DIRECTIONS.** Roundup Ready® crops contain genes that confer tolerance to glyphosate, the active ingredient in Roundup® brand agricultural herbicides. Roundup® brand agricultural herbicides will kill crops that are not tolerant to glyphosate. Acceleron and Design®, Genuity and Design®, Genuity Icons, Genuity®, Roundup PowerMAX®, Roundup Ready 2 Yield®, Roundup Ready®, Roundup Technology®, Roundup®, are trademarks of Monsanto Technology LLC. All other trademarks are the property of their respective owners. ©2011 Monsanto Company.

2012 Genuity® Roundup Ready 2 Yield® Soybean Varieties

2612RR2Y

- 2.6 RM
- Excellent stress tolerance
- Works well in no-till
- Tall plant height with impressive podding
- Rps 1C gene & SCN P188-788
- Excellent disease scores
- Great defensive package



2912RR2Y

- 2.9 RM
- Excellent yield & defense package for Ohio
- Excellent disease package :
- Double shot against phytophthora Rpsclc & Rps 3A
- Outstanding disease scores
- Taller branchy plant type
- Outstanding emergence works in:
 - no-till
 - minimum-till
 - conventional



2811RR2Y

- 2.8 RM
- Excellent emergence and early season vigor for minimum & no-till
- Excellent to good tolerance to phytophthora root rot with Rps 1C gene
- Medium-tall, bushy, plant type



3411 RR2Y

- 3.4 RM
- Absolute powerhouse
- Tawny, medium bush, medium-tall variety
- Adapted to most soils with good standability
- Very good agronomics package
- Rps 1c gene for phytophthora with good field tolerance



3212RR2Y

- 3.2 RM
- Medium-tall plant with good bushing, quickly covers rows
- Rps 1C with good/very good field tolerance
- Good standability until harvest
- Very attractive appearance with excellent yield potential



2012 Roundup Ready® Soybean Varieties

2608RR

- 2.6 RM
- Early to Mid II maturity (allows fall wheat planting) with powerful yield potential
- Attractive medium height (37") plants with bushy branching
- Strong disease package that includes K-gene
- Excellent field emergence & vigor



2909RR CYSTX

- 2.9 RM new total Cyst
- Resistant to Phytophthora, Rps 1k
- Med/tall plant (38") with medium bush plant type
- Works well on all soil types
- Good overall plant health
- This variety provides complete genetic resistance to all known U.S. races of SCN and reduces field cyst counts
- Should be planted where Cyst Nematodes are thought or known to be
- Will increase yield 30 to 70% on high cyst fields



2900RR

- 2.9 RM
- Rps 1K Phytophthora resistance
- Medium plant height, good for all row widths
- Good White Mold and Brown Steam Rot resistance
- Consistent work horse yielder, super yield potential



2914RR

- 2.9 RM
- Tall plant height with excellent standability works well in all row widths
- Excellent tolerance to Phytophthora root rot, & contains Rps 1K gene
- Very good emergence and stress tolerance with a good disease package



3106RR

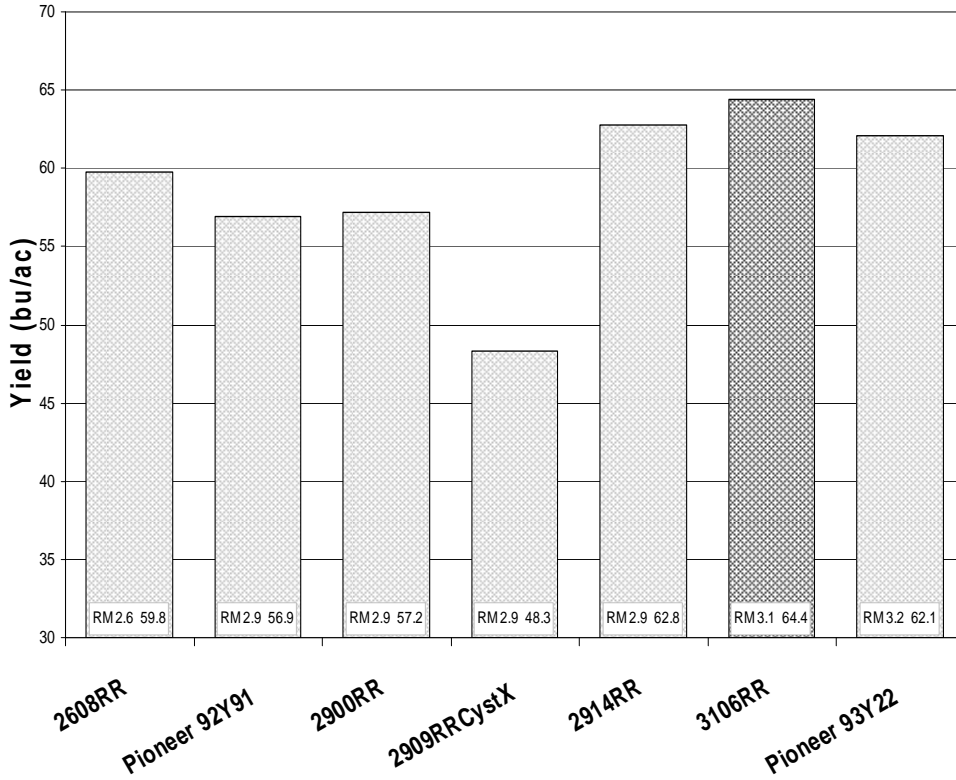
- 3.1RM
- Tall plant type with excellent standability
- Excellent tolerance to Phytophthora root rot, contains Rps 1C
- Excellent seedling vigor for minimum till, no-till situations
- Works well in all row widths





Roundup Ready® Soybean Plot Yield Data

Planted 6-9-11, Harvested 10-10-11, Monroeville, Ohio



3106RR

- 3.1 RM
- Tall plant type with excellent standability
- Excellent tolerance to Phytophthora root rot, contains Rps 1C
- Excellent seedling vigor for minimum till, no-till situations
- Works well in all row widths
- Handles heavy wet conditions



Genuity® Roundup Ready 2 Yield® Soybean Plot Yield Data

Planted 6-9-11, Harvested 10-11-11, Monroeville, Ohio

2811RR2Y

- 2.8 RM
- Excellent emergence and early season vigor for minimum till & no-till
- Excellent to good tolerance to phytophthora root rot with Rps 1C gene
- Medium-tall, bushy, plant type
- Some Cyst nematode Resistance

