

# Genuity® Roundup Ready 2 Yield® Mid Season Trait Talk



## Roots, Shoots and Nodes

Genuity® Roundup Ready 2 Yield® soybeans with Acceleron™ Seed Treatment Products have greater root biomass, more nodes on the main stem and larger shoot biomass than first-generation Roundup Ready® soybeans. Robust roots can provide improved access to soil moisture and nutrients. Extra nodes present the opportunity for additional pods. A faster growing plant canopy can capture more sunlight for photosynthesis and reduce weed pressure. Read the results from a large 2009 study that helps explain why we see higher yield potential.

### Brown Stem Rot (BSR)



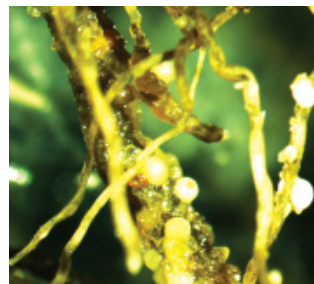
BSR is a late-season disease favored by cool temperatures (59° to 81°F). Yield losses can reach 30% when environmental conditions are favorable for the disease.

## Late Summer Soybean Diseases and Insects

Soybean diseases and insect pests can significantly reduce soybean yield potential. Correctly identifying diseases and insects can help determine potential actions in 2010 and impact future seed placement plans. Use the Soybean Disease and Insect Calendars to help you scout in your local geography.

Growers can help maximize the higher yield potential of Genuity® Roundup Ready 2 Yield® soybeans by minimizing crop stress caused by late season soybean diseases and insects by applying foliar fungicides and insecticides during reproductive growth stages. 2009 Monsanto field trials show significant yield response of Genuity® Roundup Ready 2 Yield® soybeans from increased management.

Use the Soybean Disease and Insect Calendars to help correctly identify diseases and insects.



SOYBEAN CYST NEMATODE (SCN)



TWO-SPOTTED SPIDER MITE  
Enlarged photo from an electron micrograph

For complete Agronomic Spotlight details, please visit [www.genuity.com/soybean.aspx](http://www.genuity.com/soybean.aspx)

Monsanto Company is a member of Excellence Through Stewardship® (ETS). Monsanto products are commercialized in accordance with ETS Product Launch Stewardship Guidance, and in compliance with Monsanto's Policy for Commercialization of Biotechnology-Derived Plant Products in Commodity Crops. This product has been approved for import into key export markets with functioning regulatory systems. Any crop or material produced from this product can only be exported to, or used, processed or sold in countries where all necessary regulatory approvals have been granted. It is a violation of national and international law to move material containing biotech traits across boundaries into nations where import is not permitted. Growers should talk to their grain handler or product purchaser to confirm their buying position for this product. Excellence Through Stewardship® is a registered trademark of Biotechnology Industry Organization.

ALWAYS READ AND FOLLOW PESTICIDE LABEL DIRECTIONS. Roundup Ready® crops contain genes that confer tolerance to glyphosate, the active ingredient in Roundup® brand agricultural herbicides. Roundup® brand agricultural herbicides will kill crops that are not tolerant to glyphosate. Genuity and Design®, Genuity Icons, Roundup®, Roundup Ready®, and Roundup Ready 2 Yield® are trademarks of Monsanto Technology LLC. All other trademarks are the property of their respective owners. ©2010 Monsanto Company.

