

WEED CONTROL CROP SAFETY FLEXI-  
BILITY PROFITABILITY WEED CONTROL  
Roundup Ready®  
Corn 2  
FLEXIBILITY PROFITABILITY WEED CON-  
TROL CROP SAFETY FLEXIBILITY PROF-  
ITABILITY WEED CONTROL CROP SAFE-  
TY FLEXIBILITY PROFITABILITY WEED  
CONTROL CROP SAFETY FLEXIBILITY  
PROFITABILITY WEED CONTROL CROP

IT FITS HOW YOU FARM



ROUNDUP READY® CORN 2

For the way

WEED CONTROL • CROP SAFETY • FLEXIBILITY • PROFITABILITY • WEED CONTROL • CROP SAFETY • FLEXIB

In 2007, Roundup Ready® Corn 2 is projected to be planted on more than 50 million acres—making it the number one corn weed-control system in U.S. agriculture. Specifically engineered to work with Roundup® agricultural herbicides, the Roundup Ready Corn 2 system provides a superior combination of crop safety, weed control and application flexibility for healthier plants and higher yield potential. Across the Corn Belt, season after season, farmers count on Roundup Ready Corn 2.

Change how you profit,  
not how you farm.



# you farm.

ILITY • PROFITABILITY • WEED CONTROL • CROP SAFETY • FLEXIBILITY • PROFITABILITY • WEED CONTROL

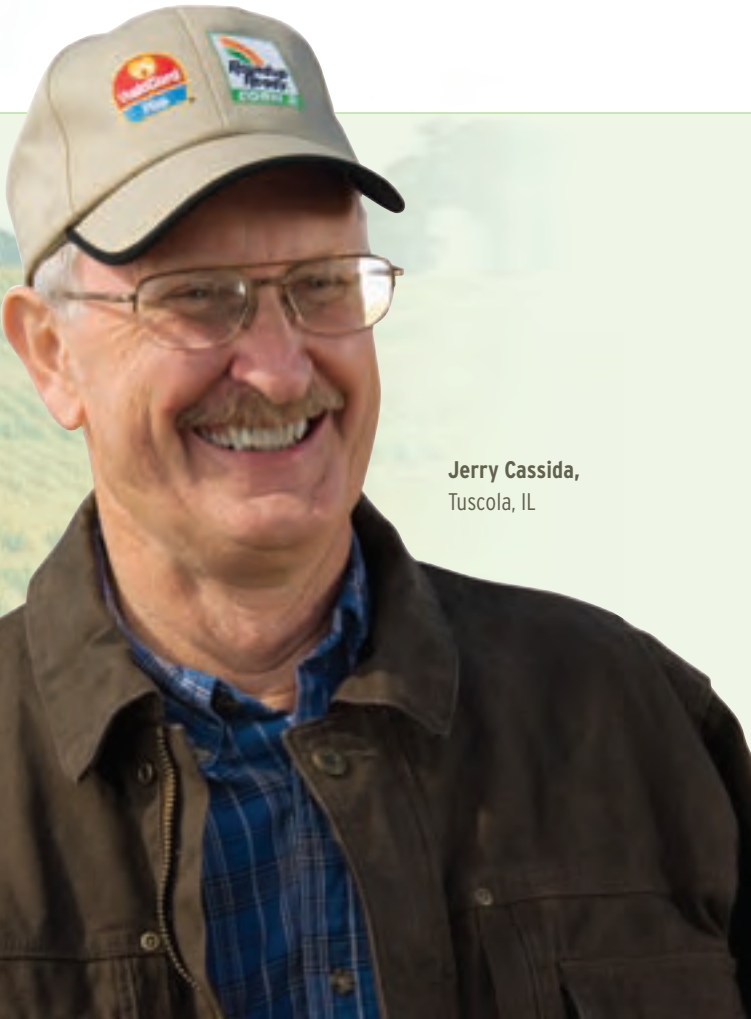
Compared to popular conventional corn programs, the Roundup Ready Corn 2 system costs less while allowing hybrids to reach their full yield potential. With a five year average of \$18 more profit per acre, Roundup Ready Corn 2 can add to your bottom line without restricting how you farm. Its application flexibility fits all spray programs:

- Preemergence residual herbicide followed by a postemergence herbicide.
- Preemergence residual herbicide tank-mixed with a postemergence herbicide.
- Sequential postemergence herbicide only.

## Broad-Spectrum Weed Control

When planting Roundup Ready Corn 2, only the Roundup Ready Rate of a residual herbicide is needed for early-season weed control. The Roundup Ready Rate is a proven cost-effective option for obtaining the security of a residual in Roundup Ready Corn 2. With the correct application of a residual herbicide, the post-application window is widened without sacrificing efficacy on the toughest, early-season weeds. It is the best way to control weeds and costs, plus maximize yield potential.

Control more weeds with Roundup agricultural herbicides.\*



Jerry Cassida,  
Tuscola, IL

GRASS/WEED	Roundup WeatherMAX®	Steadfast®	Callisto®	Clarity®	Distinct®	Hornet®
Barnyardgrass	C	C	N	N	S	N
Crabgrass	C	C	C	N	N	N
Fall Panicum	C	C	N	N	S	N
Foxtail (species)	C	C	N	N	S	N
Wild Proso Millet	C	C	N	N	N	N
Woolly Cupgrass	C	C	N	N	N	N
Cocklebur	C	S	C	C	C	C
Kochia	C	N	S	C	C	S
Lambsquarters	C	S	C	C	C	S
Nightshade, Black	C	N	C	C	C	S
Pigweeds, Smooth, Tall	C	C	C	C	C	S
Ragweed, Common	C	N	S	C	C	C
Ragweed, Giant	C	N	C	C	C	C
Smartweed	C	S	C	C	C	C
Velvetleaf	C	S	C	C	C	C
Waterhemp	C	S	C	C	C	S

C = Control, S = Suppression or partial control, N = Not listed

\*Postemergence application after corn spike. This is not a product label. Consult appropriate product label for herbicides listed above for proper use instructions.

## Application Flexibility

With the widest application window, the Roundup Ready® Corn 2 system has flexibility built right in.

- Starting clean by controlling weeds early with a residual herbicide increases flexibility for maximum weed control and helps manage around the weather.
- In general, weed flushes should be controlled before they exceed 4 inches in height. However, when the weather doesn't cooperate, Roundup WeatherMAX® provides a wider window of application than other postemergence herbicides.\*
- Opportunity to control late annual weed flushes.

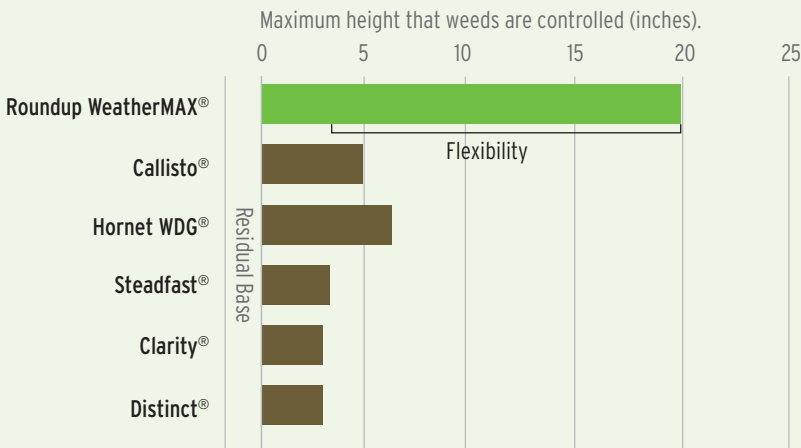
\* Non-glyphosate-based herbicides.



The Roundup Ready Corn 2 system provides greater flexibility than the Liberty Link® system on tough weeds.

GRASS/WEED	Labeled Weed Height* (inches)	
	Roundup WeatherMAX® (22 oz/A)	Liberty® (32 oz/A)
Barnyardgrass	6	3
Pigweed	18	4
Waterhemp	6	4
Velvetleaf	6	5
Common Lambsquarters	12	4
Common Ragweed	12	6
Giant Foxtail	20	6
Woolly Cupgrass	12	6

\* Maximum weed height for the herbicide rate, per the product label.



Data compiled from herbicide product labels using standard use rates, average weed heights, and no tank-mix partners. Consult product labels for the actual maximum height for control of difficult weeds.

The Roundup Ready Corn 2 system simplifies weed control and provides greater flexibility to manage around the weather.

In general, weeds should be controlled before they exceed 4 inches in height.

# only better.

QUALITY • PROFITABILITY • WEED CONTROL • CROP SAFETY • FLEXIBILITY • PROFITABILITY • WEED CONTROL

## Proven Crop Safety

**Because Roundup Ready Corn 2 was developed to work with Roundup® agricultural herbicides, it is proven crop safe compared with other non-glyphosate postemergence herbicides.**

The Roundup Ready Corn 2 system can reduce potential yield loss from crop injury resulting in an average of up to 5.6 more bushels\* per acre than conventional corn herbicide programs. In fact, Roundup Ready Corn 2 used as part of the Roundup Ready program outyielded other programs using the same hybrids in 71 percent of field trials.

## Yields, Yields, Yields

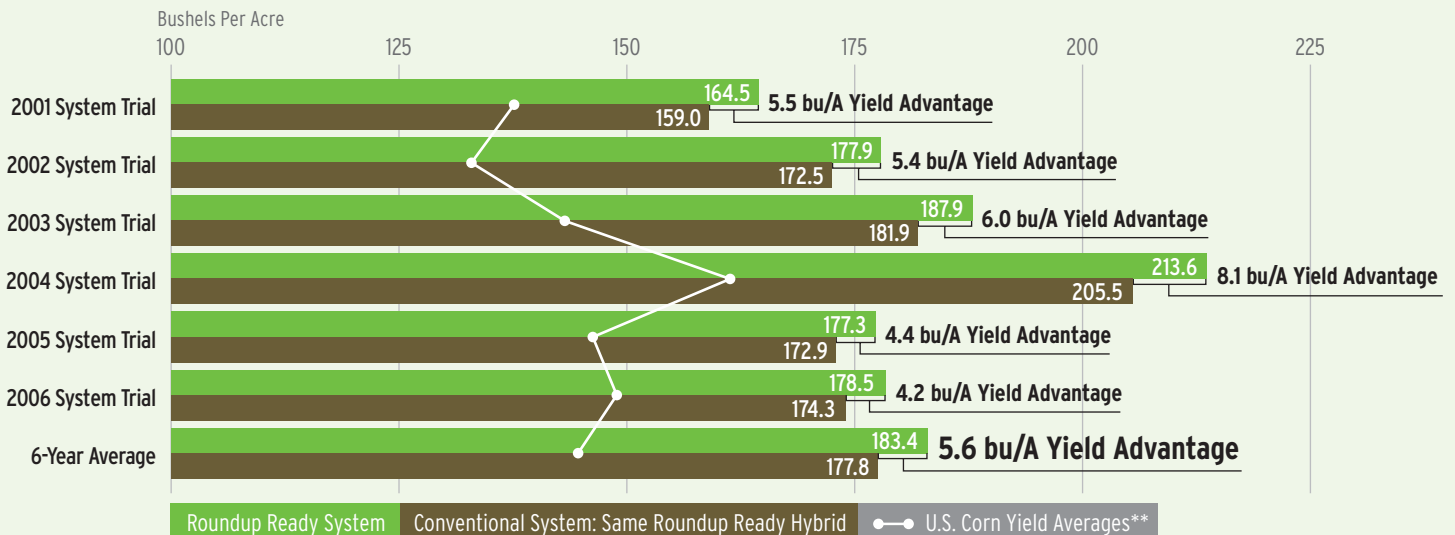
The Roundup Ready Corn 2 system provides unsurpassed weed control and proven crop safety, resulting in overall plant health and higher yield potential.

- Broad-spectrum weed control.
- Proven crop safety.
- Higher yield potential.
- Up to \$18 more profit potential per acre.\*

\*Source: 433 field-trial comparisons, same Roundup Ready product. University, grower on-farm and Monsanto trials, 2001-2006. Herbicide and seed costs based on in-season estimated 2007 prices. Prices may vary in your area.



Regardless of the season, the Roundup Ready Corn 2 system\* outyields conventional herbicide programs.



\*Source: 433 field-trial comparisons, same Roundup Ready product. University, grower on-farm and Monsanto trials, 2001-2006. Herbicide and seed costs based on in-season estimated 2007 prices. Prices may vary in your area.

\*\*Source: USDA corn yield averages

ROUNDUP READY® CORN 2

# Choose the

WEED CONTROL • CROP SAFETY • FLEXIBILITY • PROFITABILITY • WEED CONTROL • CROP SAFETY • FLEXIB

## START CLEAN, STAY CLEAN.™

### START CLEAN: Add a preemergence residual.

- A Roundup Ready® residual rate of a Harness® or Degree® brand is all you need.
- Early-season weed control is critical to maximizing yield potential.
- It reduces weeds to reduce the weed seed bank.
- It provides better flexibility for maximum weed control—pre- to late-post.

### STAY CLEAN: Use the right rate at the right time.

- Timely applications and the appropriate rate of Roundup® brand agricultural herbicides will give you unsurpassed broad-spectrum weed control.
- Because Roundup brand agricultural herbicides are so effective, they may be the only postemergence products you need.

Added protection for your Roundup Ready Corn 2 from unexpected weed flushes is included in the Roundup Rewards® START CLEAN, STAY CLEAN.™ Assurance Plan.



## Roundup Ready RATE™

Maximize Your Roundup Ready® Investment

The Roundup Ready Rate of a residual herbicide is proven and tested to deliver optimum crop safety and early-season weed control resulting in added flexibility for applying a postemergence herbicide in your Roundup Ready Corn 2.



1.5 pt.



3.0 pt.



1.2 qt.



1.5 qt.



2.0 qt.



2.0 qt.



2.0 qt.



2.0 qt.



4.0 qt.

# system for you.

ILITY • PROFITABILITY • WEED CONTROL • CROP SAFETY • FLEXIBILITY • PROFITABILITY • WEED CONTROL

## Maximize Weed Control to Minimize the Risk of Weed Resistance

**With good stewardship practices, Roundup Ready Corn 2 technology can be used year after year for broad-spectrum weed control while minimizing the risk of weed resistance. It's just a matter of following a few simple guidelines:**

### Weed Management Tips

- Start clean and control weeds early.
- Use Roundup Ready technology as your foundation.
- Add other herbicides and cultural practices where appropriate as part of the Roundup Ready System.
- Use the right rate at the right time.
- Control weeds throughout the season and reduce the weed seed bank.

Roundup Ready Corn 2 weed management strategies including system recommendations are available at [www.weedresistancemanagement.com](http://www.weedresistancemanagement.com) from the following weed specialists and agronomists:

**Dr. Jeff Gunsolus**  
University of Minnesota

**Dr. Bill Johnson**  
Purdue University

**Dr. James Martin**  
University of Kentucky

**Dr. Mike Owen**  
Iowa State University

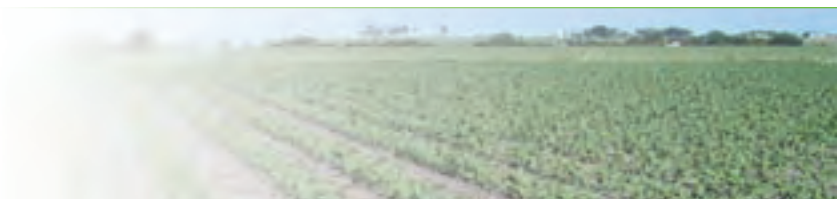
**Dr. Bryan Young**  
Southern Illinois University

**Dr. Robert Wilson**  
University of Nebraska



## Rate Your Risk, Know Your Options

A Weed Resistance Risk Assessment tool has also been developed to help you gauge your risk of developing glyphosate-resistant weeds. Go to [www.weedtool.com](http://www.weedtool.com) and in a few easy steps, find ways to better manage that risk without limiting yield potential.



## ROUNDUP READY® CORN 2

# Farm with Confidence

When you plant Roundup Ready® Corn 2 and use Roundup® agricultural herbicides, you may be eligible for the risk-sharing benefits of Roundup Rewards®. As the Ag industry's most comprehensive risk-protection program, Roundup Rewards is designed to protect your systems, trait purchases and herbicide investments. Since 1997, over \$700 million has been paid to farmers for problems ranging from crop losses, crop injuries, unexpected weed flushes to tough weather conditions. For information on all Roundup Rewards benefits, call **1-800-ROUNDUP** or contact your local Monsanto Authorized Retailer.



## Roundup Rewards Has You Covered.



Roundup Rewards® applies only to Roundup® branded and other agricultural herbicides specified by Monsanto. Program details referenced in this publication are subject to change and should be verified by checking with your local Monsanto dealer or representative.

**Always Read and Follow Pesticide Label Directions.** Roundup Ready® crops contain genes that confer tolerance to glyphosate, the active ingredient in Roundup® agricultural herbicides. Roundup® agricultural herbicides will kill crops that are not tolerant to glyphosate. Bullet®, Degree®, Degree Xtra®, Field Master®, Harness®, Lariat®, and Micro-Tech® are restricted use pesticides and are not registered in all states. The distribution, sale or use of an unregistered pesticide is a violation of federal and/or state law and is strictly prohibited. Check with your local Monsanto dealer or Monsanto representative for the product registration status in your state. Bullet®, Degree®, Degree Xtra®, Field Master®, Harness®, Lariat®, Micro-Tech®, Roundup®, Roundup Original MAX®, Roundup Ready®, Roundup Rewards®, Roundup WeatherMAX® and START CLEAN, STAY CLEAN.™ are trademarks of Monsanto Technology LLC. All other trademarks are the property of their respective owners.